

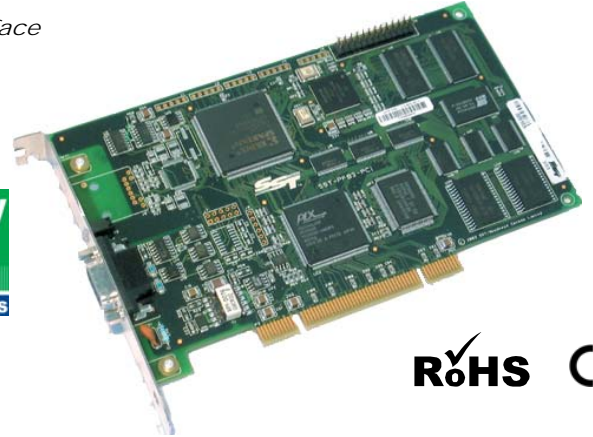


BradCommunications™ SST™ PROFIBUS network interfaces provide high-performance control and the support required for your PROFIBUS applications.

SST™ PROFIBUS Interfaces

For Controlling and Monitoring PROFIBUS Applications

PCI Bus Interface



Features

- Simultaneous execution of PROFIBUS DP Master, DP Slave and FDL (layer 2)
- Master Class 1 and Class 2 DPV1 support through Windows API
- Supports all standard baud rates: 9.6 Kbaud to 12 Mbaud
- Flash memory for storage of configuration
- Supports device configuration and diagnostics through FDT using commDTM
- Supports all PROFIBUS baud rates including 45.45 kbps
- Diagnostic LEDs for system status, watchdog timeout, and communications status
- PCI bus format available with one and two channels

OS and Drivers Supported

- Windows NT4 / 2000 / XP drivers
- DP configuration software with enhanced diagnostics
- OPC Server v3.0
- Open, documented memory map interface with example C source code and Windows 32-bit DLLs for custom driver development

Related Products



BradConnectivity™ Diagnostic D-Sub Connector



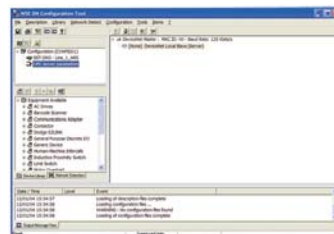
Overview

BradCommunications SST network interface cards for PROFIBUS can be found in many applications including:

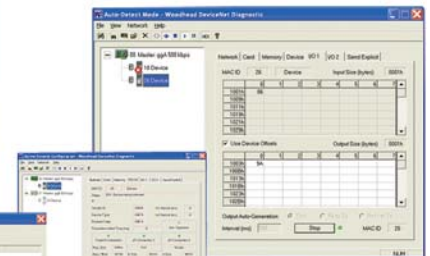
- Operator interface
- Human-machine interface
- PC control
- Device development
- Network diagnostics

Software Tools

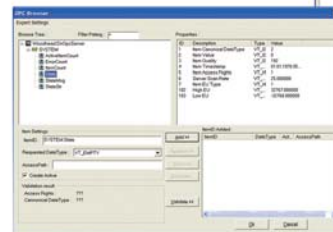
Software tools available for BradCommunications SST PROFIBUS network interface cards enable fast integration of industrial communications into your application.



Configuration Console



Diagnostic and Test Tools



OPC Browser

SST™ PROFIBUS Interfaces



Network Specifications

Protocol	<ul style="list-style-type: none"> PROFIBUS Master DP-V0, Class 1 and Class 2 PROFIBUS Slave DP-V0 PROFIBUS Master DP-V1, Class 1 and Class 2 FDL Layer 2
Data Rate	<ul style="list-style-type: none"> All PROFIBUS data rates up to 12Mbps
Cable	<ul style="list-style-type: none"> Belden 3079A Brad Harrison® 85-0001 PVR2 conductor with shield, UL-listed
Connector	<ul style="list-style-type: none"> DB9 female connector per port/channel Brad Harrison Diagnostic D-Sub connector part number: MA9D01-42
Isolation	<ul style="list-style-type: none"> 1000 V

Hardware Specifications

	PCI	ISA	PC/104
Bus Interface	Compliant with PCI 2.2; will operate in 2.3 and some 2.1-compliant systems	Compliant with EISA Specification Version 3.12	Compliant with PC/104 Specification Version 2.3
Processor	ColdFIRE 5272		
Memory	One channel: 256K Window Two channel: 512K Window	Min. 8K Window in host memory map (max. 256K and default 16K)	Min. 8K Window in host memory map (max. 256K and default 16K)
Diagnostics	LEDs for system status and communications status		
Interrupts	Hardware Plug & Play (32 Kbytes used per card)	Software selectable level IRQ 0 through 7	
Dimensions (Length x Width)	6.875 in x 4.2 in (17.463 cm x 10.668 cm)	6.225 in x 4.2 in (15.812 cm x 10.668 cm)	9.588 cm x 9.017 cm (3.775 in x 3.550 in)
Typical Current Draw	600 mA		
Voltage Requirements	5V and 3.3V	5V	
Resources	PCI Region 0=128 bytes PCI memory PCI Region 2=256K of 32-bit PCI memory (one channel) and 512K of 32-bit PCI memory (two channels) PCI Region 3=32 bytes of 32-bit PCI memory One PCI interrupt	ISA Memory Region = 256K of 16-bit ISA memory ISA I/O Region = 8 bytes of ISA I/O memory One ISA interrupt	PC/104 Memory Region = 256K of 16-bit PC/104 memory PC/104 I/O Region = 8 bytes of PC/104 I/O memory One PC/104 interrupt
Operating Temperature	0°C (32°F) up to +60°C (140°F)		
Storage Temperature	-40°C (-40°F) up to +85°C (185°F)		
Humidity	5% to 95% non-condensing		
RoHS compliant	Yes	Yes	No

Ordering Information

Part Number	Product Description	Other Related Products
SST-PB3-PCU	PROFIBUS card, Universal PCI bus, 3.3V/5V, PCI-X compatible	IP67 and IP20 I/O Gateways Cable Assemblies Diagnostic Tools Network Interfaces
SST-PB3-PCU-2	PROFIBUS card, Universal PCI bus, 3.3V/5V, PCI-X compatible, two channels	
SST-PB3-104	PROFIBUS card, PC/104	
SST-PB3-ISA	PROFIBUS card, ISA	
SST-PB3-CNF-P	Configuration Console Application, parallel key	
SST-PB3-CNF-U	Configuration Console Application, USB key	
SST-PB3-OPC	OPC Server	
SST-PB3-104-25	Bulk of 25 of the SST-PB3-104	
SST-PB3-PCU-25	Bulk of 25 of the SST-PB3-PCU	

To contact us: www.woodhead.com

Reference Number: DW200578 Date Published: October 2007

North America: US: +1 800 225 7724 – Canada: +1 519 725 5136

Europe: France: +33 2 32 96 04 20 – Germany: +49 7252 94 96 0 – Italy: +39 010 59 30 77 – United: Kingdom +44 1495 356300

Asia: Shanghai, China: +86 21-5835-9885 - Tianjin, China: +86 22-23321717

Singapore: +65 6268-6868 – Yamato, Japan: +81 46-265-2428 – Nagoya, Japan: +81 52-221-5950