

## TM3 Modules, PlugIns allow tight integration with applications



### Modules extend the functionality of ThinManager

Modules are ThinManager add-on features that add functionality to individual thin clients. ThinManager Modules operate from the thin client management portion of ThinManager, therefore you can run them on as many or as few thin clients as you like.



### PlugIns make ThinManager the most versatile thin client solution available

ThinManager Plug-Ins add functionality from the server management portion of the ThinManager program. Because they are server-side, add-on features, they function for the entire network.

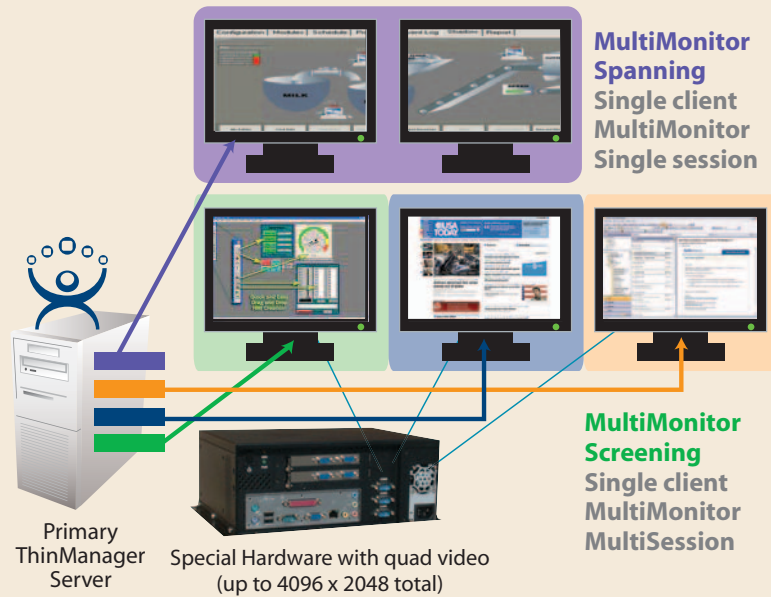
**NEW!**



ACP's latest module, MultiMonitor, allows ThinManager users to take advantage of new ThinManager Ready thin clients coming from Arista and Advantech and display up to five screens on a single thin client. While a few other thin client companies have started to offer multiple monitors, ACP is the first to allow the client to display a different session on each of the screens.

By combining MultiMonitor with other ThinManager PlugIns and Modules users can create new and exciting applications.

## ThinManager® MultiMonitor & MultiSession (supports up to five monitors)



## Create applications with better workflow for users

More than a platform improvement, ThinManager now offers enhanced workflow, application access, user tracking, and a more secure environment.

### MultiMonitor

Use the new MultiMonitor to provide greater screen real estate.

### Combine MultiMonitor and MultiSession

Combine MultiMonitor and MultiSession to provide simultaneous access to multiple applications on multiple monitors through one thin client. This is called MultiSession Screening.

### TermSecure

Use TermSecure to restrict access to sessions with a secure login. This can be configured with username and password, a prox card, or a combination of both.

### TermSecure and MultiSession

Combine TermSecure and MultiSession and you can have a user's applications follow them as they move around the plant floor. Managers can access sensitive information securely from any thin client.

### Active X Control

Use the Active X Control to integrate application access from within your HMI applications.

### Smart Session (Load Balancing)

Smart Session's unique Queuing feature helps administrators manage the terminal server's processor load by pausing individual clients at the time of login.

TermSecure™ for ACP ThinManager Ready clients adds tremendous functionality to the plant floor. This unparalleled security is only available with ThinManager® clients and actually boosts productivity and flexibility. We call this "Secure Access, Smart Context." Read on and you'll see that it's just plain smart.

## Secure your terminals... and make money doing it.

### Protect

TermSecure adds an additional layer of security to your Windows environment providing you with the protection you need.

### and serve...

Authorized users still need quick access to their applications. As you move from client to client, TermSecure logs you in and instantly reconnects you to your existing Terminal Server sessions. Your programs follow you and appear on screen; served up and ready to use as you approach. Very cool. Walk away and your applications disappear.

### Authenticate

Identify yourself at a TermSecure enabled device using an RFID proximity card (short or long range), a USB flash key, or login manually. Combine authentication methods and greatly increase security.

### Control

Control user access to applications through group permissions; or to terminals using both group permissions and terminal scheduling. Limit a specific user to a weekly, daily or hourly schedule or disable the terminal itself at any time you choose.

### Extend

Drop our ActiveX control into your applications and you can program in terminal and user specific functionality including session switching, event logging, and terminal status and management.

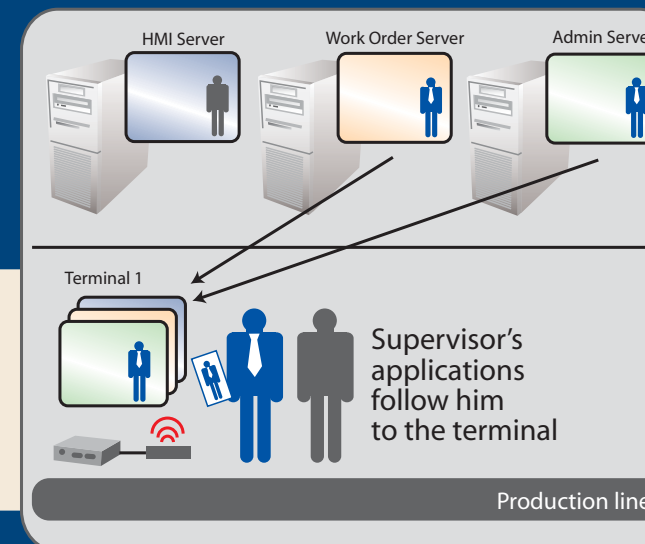
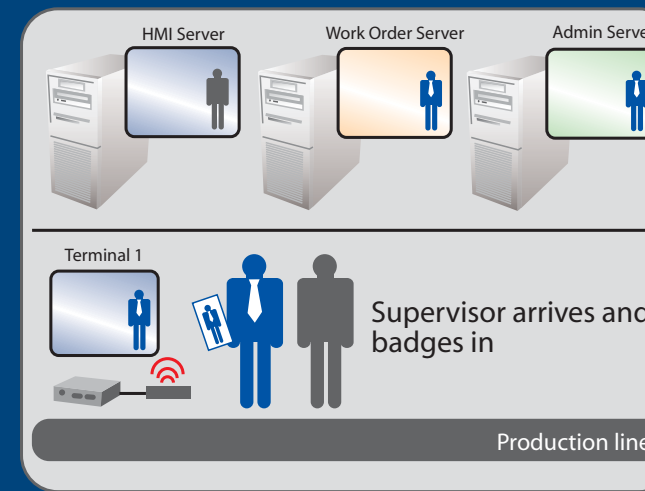
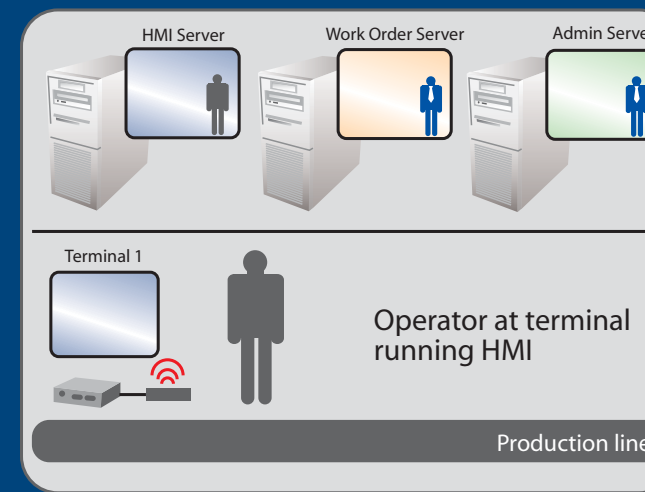
### Save

Prevent a single unauthorized access to your systems and you might also prevent a downtime event that more than pays for this software. Save a minute or more each time you access applications from a client over the life of your systems and now you have money in the bank.

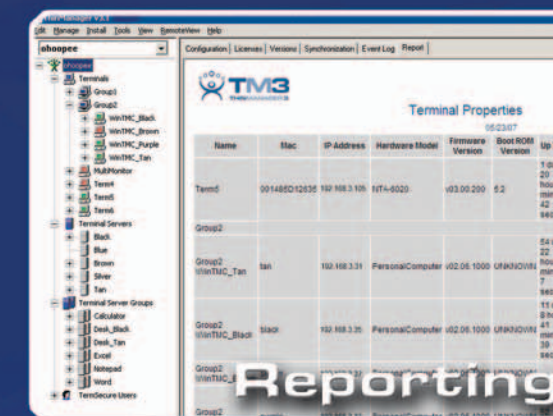


TermSecure

TermSecure adds an additional layer of security to your Windows environment, providing you with the protection you need.



Centralized Configuration, Management, and Security Software for Thin Client Networks



Multi-Session Appliance



TermSecure



SmartSession



www.thinmanager.com

Atlanta GA 30005 • 1.877.239.4282

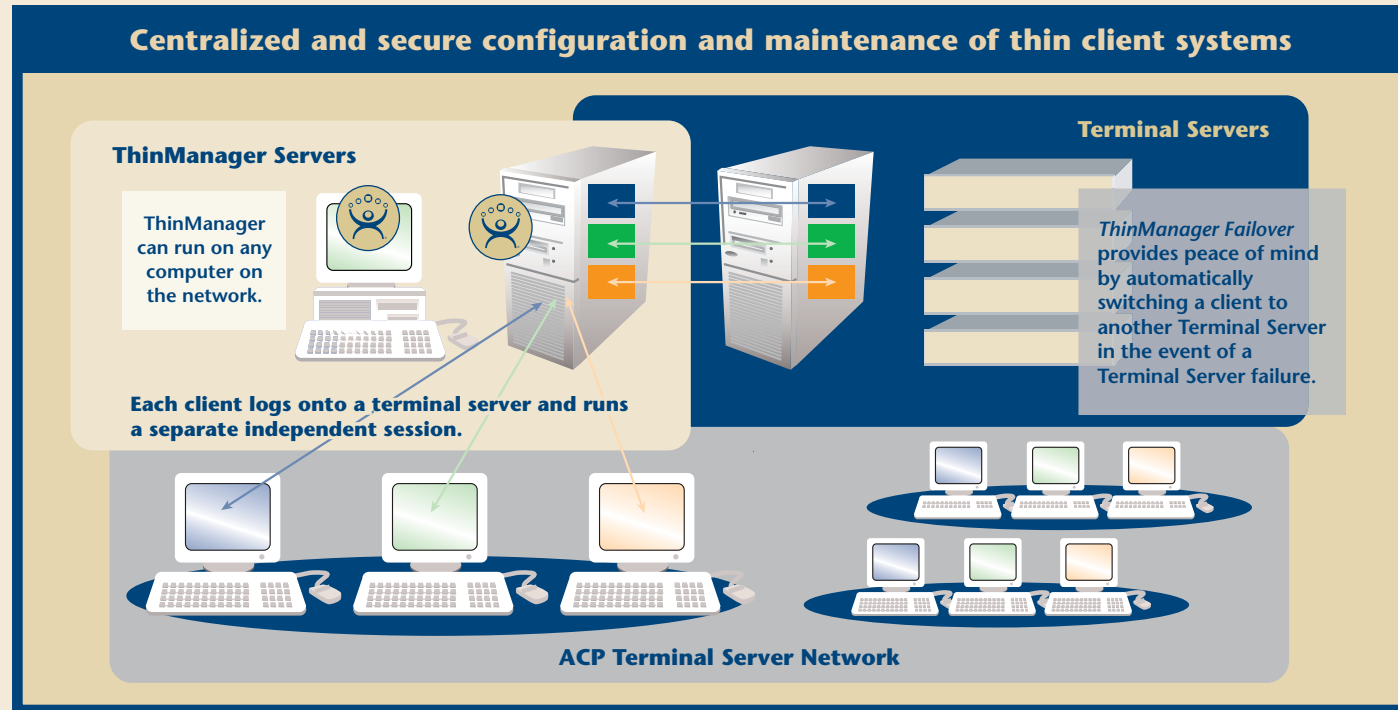
Phone: 678.990.0945 • Fax: 678.990.0951 • Email: sales@thinmanager.com ©1999-2007 Automation Control Products. All rights reserved.

www.thinmanager.com



## Terminal Server and client Management Software

To fully realize the savings of a Terminal Server environment you need the right tools. ACP has responded with ThinManager® version 3 which lets you configure, maintain, upgrade and replace client devices on your network quickly and efficiently. Its intuitive Windows Explorer®-like interface provides *At-A-Glance Management* of all connected ThinManager Ready thin clients, PCs running WinTMC and Terminal Servers. Because ThinManager is a thin client enabling technology, each connected ThinManager Ready thin client device is guaranteed to have the same internal software, assuring uniformity of operation across a wide variety of models.



ThinManager is the most complete management tool available.

### Quicker installs with less configuration

No hard drive means no software to install on the thin clients. Terminal Server environments allow a single install of each application for use by all connected clients. Configuration Wizards make setup easier than ever before.

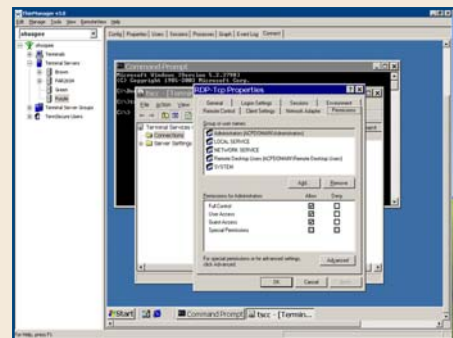
### Lower cost

Lower cost CPU, no floppy or hard drives, and less memory means thin clients are less expensive.

### Less maintenance

Maintenance is reduced to a few servers in a central location. The constant maintenance of distributed PC operating systems is eliminated with thin clients.

Remote Connect allows administrators to manage Terminal Servers from any point on the network.



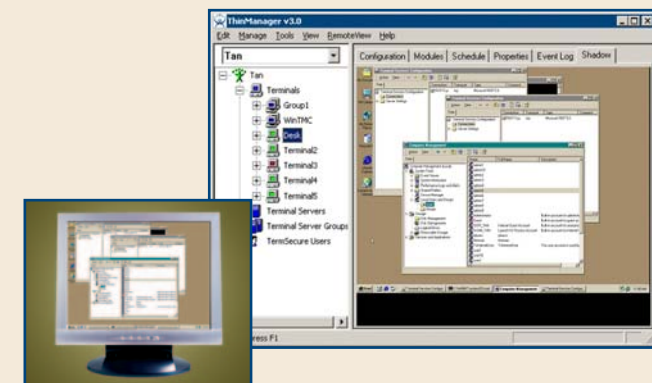
ThinManager allows you to manage your terminal server network with continuity over different client hardware platforms.

### We eliminate the 2 a.m. phone call

Equipment failure is a crisis demanding quick attention. ACP ThinManager allows any ThinManager Ready thin client to be replaced by anyone in minutes instead of the hours required for standard Windows PC replacement.

### Automatic Failover

In the event of a Terminal Server failure, the client will fail over to a back up server and continue working. Imagine the peace of mind this provides.



Remote shadowing allows administrators to solve user problems from their desks no matter where the user is located.



## Unique Features of ACP's ThinManager

### WinTMC

ThinManager supports WinTMC, ACP's software client that provides a Windows PC the functionality of a thin client.

### At-A-Glance Management

Manage your entire network from ThinManager by viewing all ThinManager Servers and all Terminal Servers in one tree. See which clients are online and follow graphically the network path from the clients back to all the servers. Configure and maintain each client individually in ThinManager or put the clients into groups and manage many clients at once.

### Failover

ThinManager allows every client to be assigned to several Terminal Servers. If the current Terminal Server fails, the client will switch to another designated Terminal Server, allowing the unit to continue functioning in the event of a server failure. The Instant Failover Module allows clients to run sessions on two Terminal Servers simultaneously. If the primary Terminal Server fails, the client will instantly switch to the waiting session.

### MultiSession

Simultaneously connect to two or more Terminal Servers and run the applications you need. Switch between your sessions using a mouse click or keystroke. Now one ThinManager Ready thin client can give you access to all of your servers and programs at the same time.

### SmartSession

Imagine a computer network that can make decisions about how to best allocate its resources. That's what SmartSession does for your Terminal Server network. As resources are used, SmartSession decides where to assign users to keep the Terminal Servers running at peak efficiency. SmartSession's unique Queuing feature helps administrators manage the Terminal Server's processor load by pausing individual clients before connection if necessary.

Remote Administration of multiple servers and clients

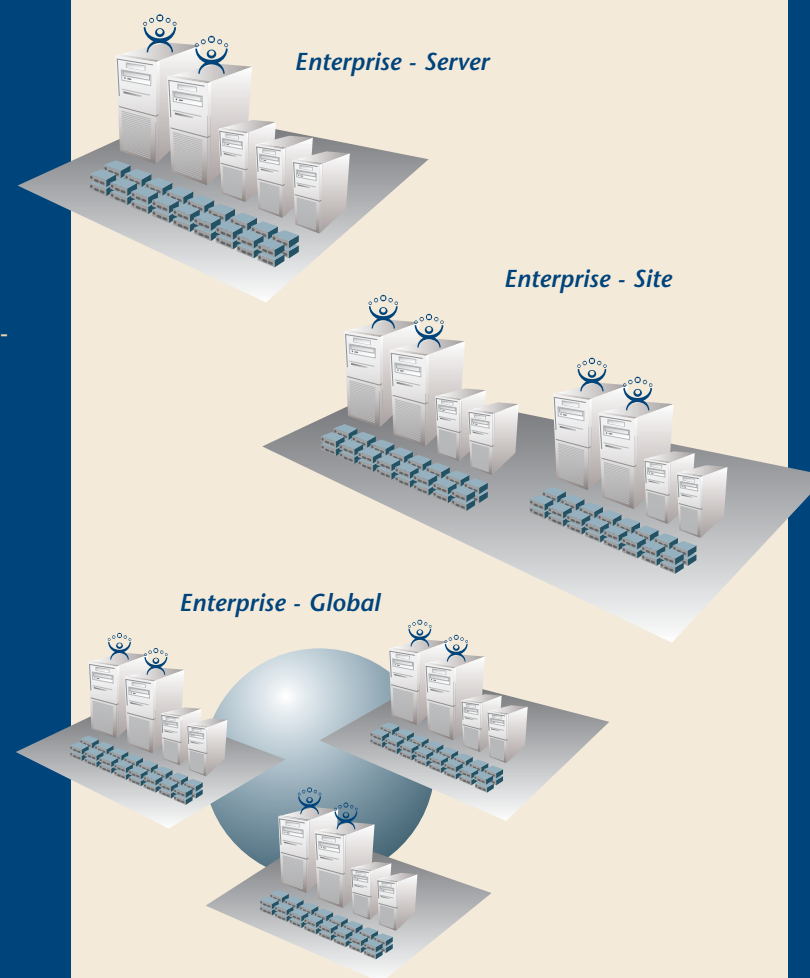
Graphs - Terminal Server Graphs and more

Event Logging for servers and clients

Reporting - Get reports on terminal server and client configurations

## Enterprise Licensing

Purchase an Enterprise license for ACP's ThinManager and connect an unlimited number of ThinManager Ready thin clients. ThinManager Enterprise (server, site or global) is the only complete thin client management tool that doesn't make you pay every time you add a client or Terminal Server.

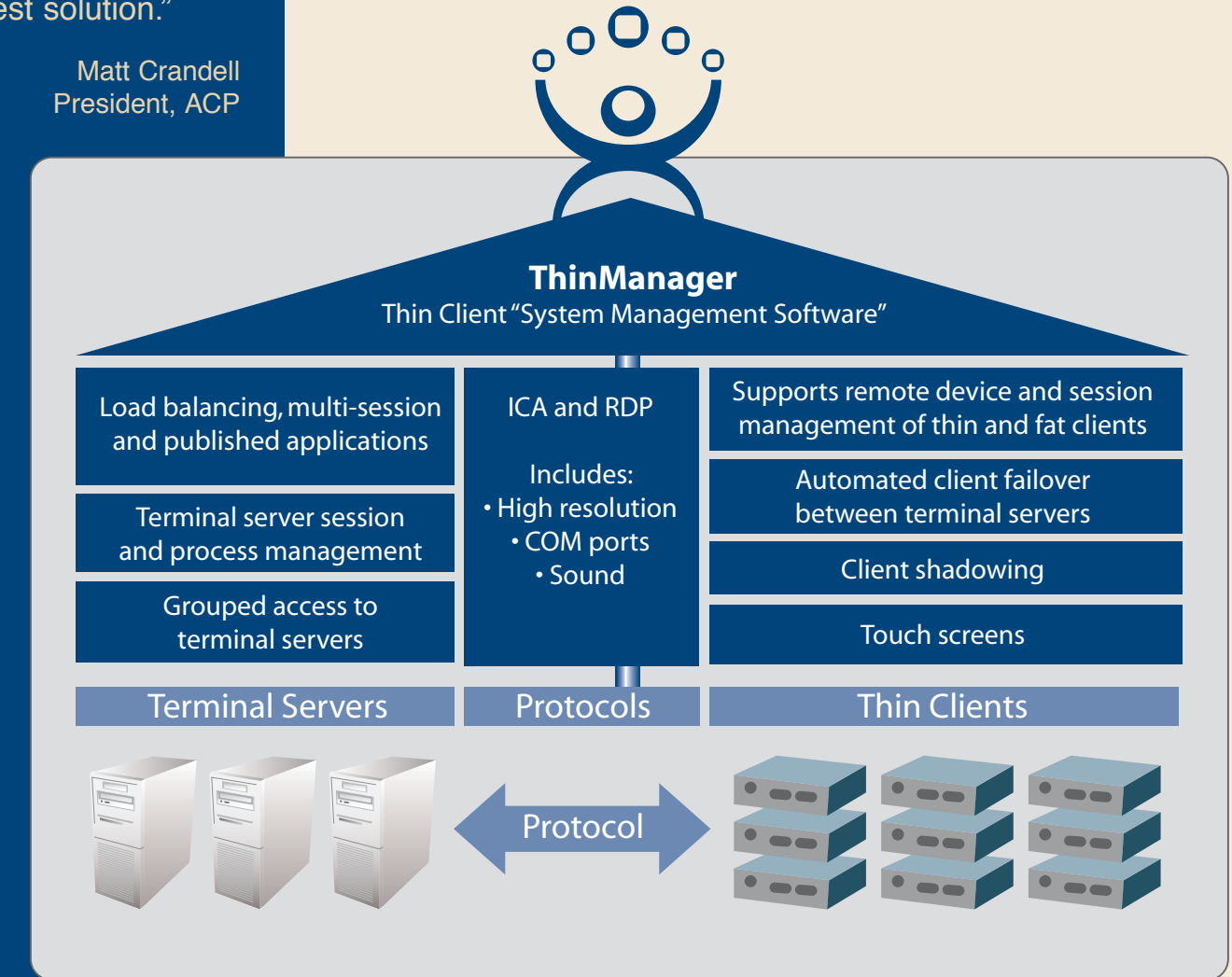


"When you're ready to get serious about thin clients, you'll find that ACP's ThinManager is the best solution."

Matt Crandell  
President, ACP

## One Management Interface is better than two or more

ThinManager is a single solution for management of fat and thin clients and all connected Terminal Servers. Combined solutions from our competitors require you to manage your environment using two or more applications. The ThinManager solution allows you to configure, maintain and control your clients and servers from one easy to use interface.

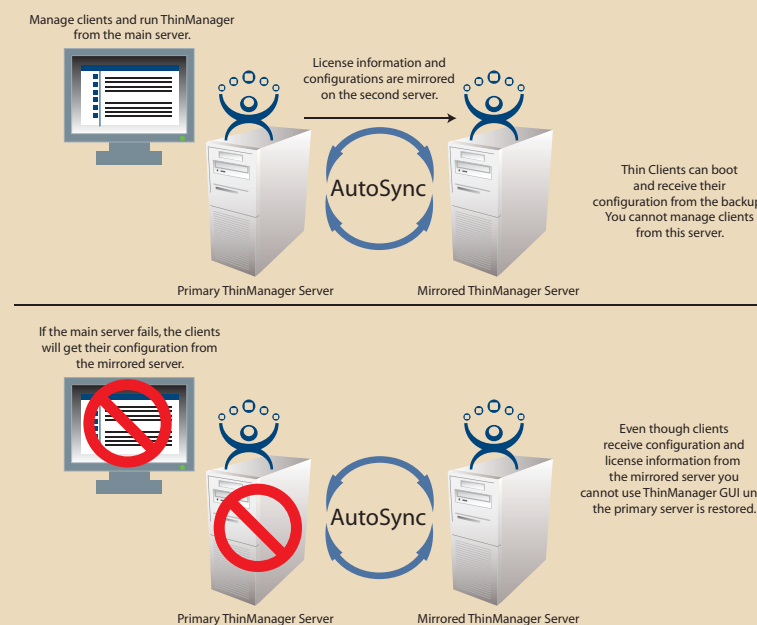


## Mirrored Licensing **NEW!**

Now you can get the advantages of ThinManager License Redundancy without having to install a second set of licenses! The new ThinManager Mirrored Licenses provide the ability to configure a mirrored ThinManager Server at a significant cost savings.

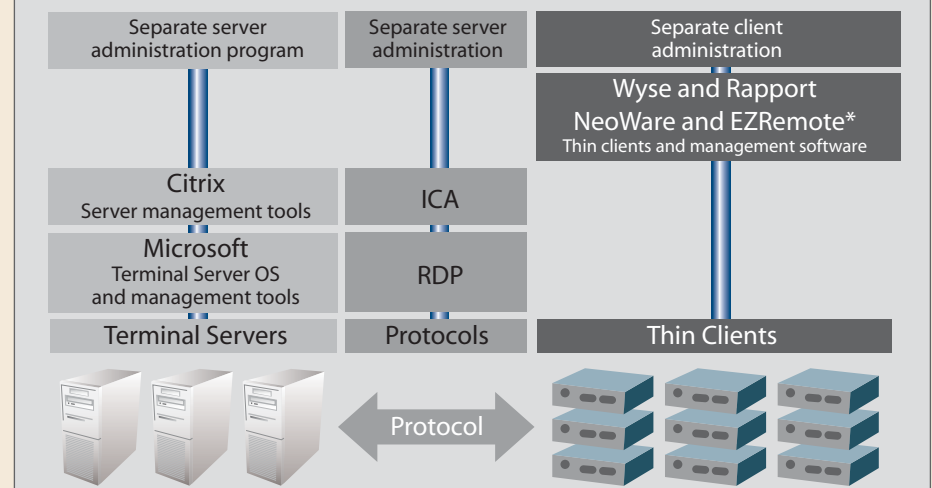
Add any of the new Mirrored Licenses to your primary ThinManager Server and identify a second ThinManager Server to be used as a mirror. ThinManager will create a mirrored copy of the base license and configure this second server to be a mirrored ThinManager Server.

The mirrored ThinManager Server does not allow a ThinManager GUI connection, but it does bring the peace of mind that comes from knowing that the thin client system will be fully functional even if the primary ThinManager Server becomes unavailable.



## Combined Solutions?

Other solutions only combine separate programs to emulate the functionality of ThinManager



\*Wyse, Rapport, NeoWare and EZRemote are all property of their respective companies.